



Supporting
parks near you



Pacific Parklands
FOUNDATION

Supporting Metro Vancouver Regional Parks

2019 **ANNUAL REPORT**
Period Ending September 2019

Metro Vancouver's regional parks enrich our quality of life and play an important role in defining our region. With our donors' help, Pacific Parklands Foundation makes the regional parks system the best that it can be, for now and for future generations.

With over 13,000 hectares and nearly 12 million visitors per year, Metro Vancouver Regional Parks serve both nature and people. Whether it is a school group on a field trip, youth restoring wetlands, or a volunteer group building accessible walkways, these greenspaces educate, inspire and support a stronger, healthier community.

healthy people = strong communities





MESSAGE FROM THE PRESIDENT & THE EXECUTIVE DIRECTOR

Our donors help send children on their first trip to the beach, restore habitat for sensitive species, and connect recent immigrants with nature and our community. We are grateful to Metro Vancouver for providing us with financial support for administrative costs, allowing us to maximize our partnerships with passionate volunteers and dedicated staff who work tirelessly to connect people and protect natural greenspaces in regional parks.

Metro Vancouver Regional Parks started over 50 years ago with a small group of leaders who envisioned a community with natural greenspaces. They saw that each year sensitive ecosystems were lost to development in Metro Vancouver. What remained was under intense pressure for conversion to residential, retail, commercial and other use. For twenty years, the Pacific Parklands Foundation has worked alongside Metro Vancouver Regional Parks to protect and restore these precious spaces and enhance them for the enrichment of our community.



We are grateful to Metro Vancouver and all our donors, partners and volunteers for joining us on our mission to continue building a rich legacy of nature spaces for our community today and in the future.

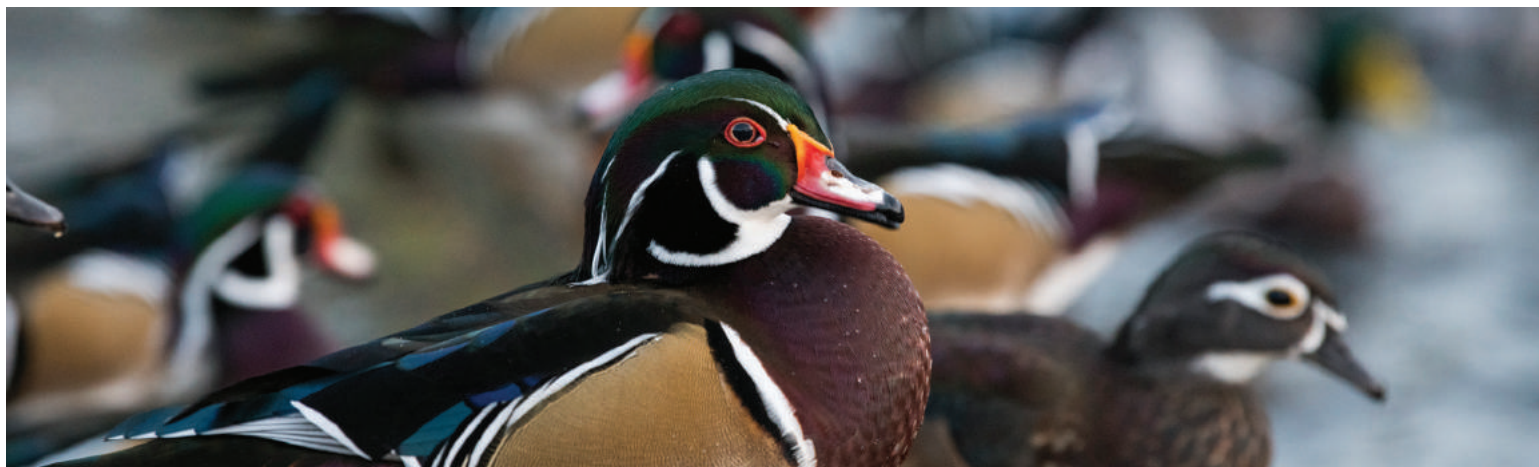
Please consider joining us today to help protect precious ecosystems and connect people to them.

Together, we can make Metro Vancouver Regional Parks the best that they can be.

Sincerely

David Pohl *President*

Janet Antonio *Executive Director*



with your
Help

Everyone can
connect with nature



BRINGING PEOPLE TO NATURE

Following a trail of ants, listening for birds singing, breathing in the mossy scent of a forest after it rains – quiet moments that connect us to nature. Metro Vancouver's regional parks include forests, rivers, beaches, bogs, and wetlands. Unfortunately for many people the rising cost of transportation prohibits them from planning field trips and spending time in nature.

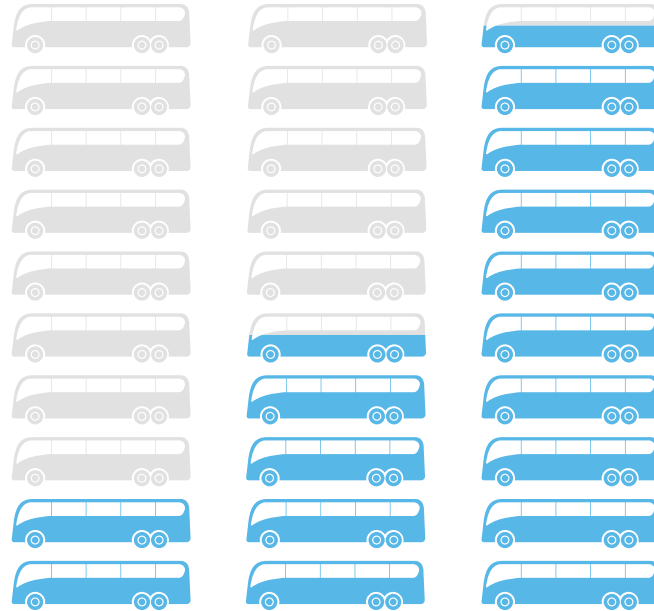
The need for affordable transportation inspired the Pacific Parklands Foundation's Bus Grant Program which has been generously supported by the Vancouver Airport Authority (YVR) for several years. Most recently, Universal Coach added their support through a unique partnership which included wrapping a bus with images of our parks, wildlife and visitors – bringing the wonder of regional parks to the streets of Metro Vancouver and beyond.



Bus Grants = 4 trips

*Thanks to YVR,
Universal Coach Line
and supporters like you,*

this was an incredibly successful year for our Bus Grant Program. These grants made it more affordable for groups of visitors, including students, seniors and recent Canadians, to visit our parks and enjoy nature. Our partners' contributions helped connect thousands of people to nature, and to Metro Vancouver's regional parks.



2017

8 trips

*\$4,000**

2018

18 trips

*\$9,125**

2019

38 trips

*\$19,125**

The number of bus trips are calculated based on \$500/trip.



"The entire trip was incredible to get out of the classroom, show students the beauty and joy and rawness of one of [Metro Vancouver's] most incredible regional parks. I think it's safe to say that one of the highlights for the students was the "Hollywood" style bus we took to get up the mountain! Every field trip we've gone on since they have asked for it!!"

– Lisa, Hastings/Beaconsfield Elementary School



"YVR is proud to support the Pacific Parklands Foundation Bus Grant Program. Providing access to those living with barriers is important to us, and when it allows access to Metro Vancouver's amazing regional parks, it's that much better."



YOUTH ENVIRONMENTAL EDUCATION AND LEADERSHIP

Weeding invasive plants, building fences or cleaning litter off our shorelines, these are just a few of the stewardship activities completed by Catching the Spirit campers this past summer. Catching the Spirit (CTS) Youth Society is a non-profit organization which provides youth across Metro Vancouver with outdoor education, stewardship experience, and leadership training. With the support of the Pacific Parklands Foundation, CTS continued to offer free youth summer camps in four Metro Vancouver regional parks.



Miku Yamada





With your Help

We provide the financial support
necessary for CTS to develop the
environmental leaders of tomorrow!

Pacific Parklands Foundation received \$88,000 in funding on behalf of CTS from the RBC Foundation, TD Friends of the Environment Foundation, and the TELUS Friendly Future Foundation for 2019 programming. With the help of generous donors, CTS can continue to develop the environmental leaders of tomorrow.

Miku Yamada has been with CTS for 5 years as a participant and a Peer Leader. In her third year as a Peer Leader, Miku demonstrates inspiring leadership abilities that she attributes to her time with the program.

"Catching the Spirit Youth Society is a one-of-a-kind youth-led program and amazing community which has inspired me to step out of my comfort zone, grow as a leader and person, connect with others in my community, initiate my love for the environment and is a program that has truly in all ways changed my life for the better."

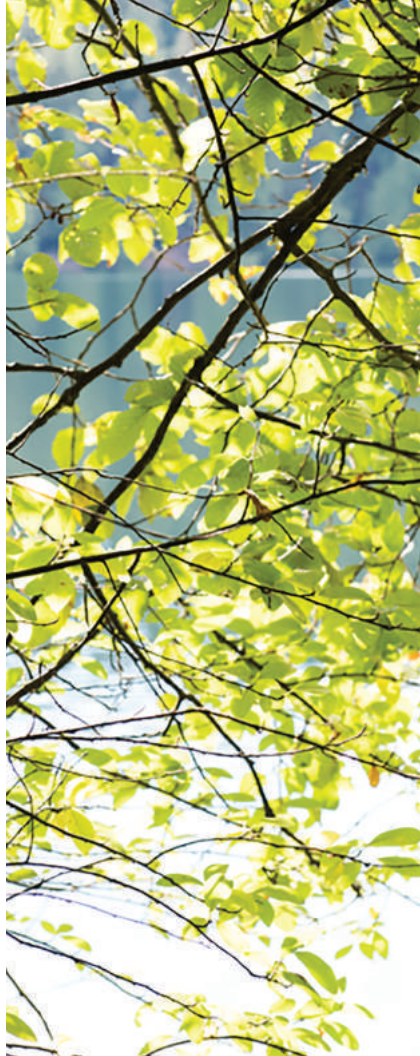
GORDON SMITH Award Spotlight

In 2019, the Gordon Smith Youth Environmental Stewardship (YES)

Fund provided two young active conservationists, **Jason Pang** and **Griffin Andersen**, with awards for their volunteer efforts. The Gordon

Smith YES Fund rewards young environmentalists for their hands-on participation in conservation activities.

This award honours the late Gordon Smith who had a passion for environmental stewardship.



INVESTING IN THE FUTURE

SCHOLARSHIPS & AWARDS CONTENT 2019

In 2009 Adam Heffey, a young camper from Catching the Spirit, received the Dr. M. Wosk Environmental Leadership Award. He remembers the excitement of meeting Dr. Wosk and receiving the award. Adam has remained active with Catching the Spirit Youth Society and volunteers as President. In the fall of 2019, it was Adam's turn to present the award to the most recent recipient, Una Chang.

Una Chang exhibits leadership and exemplifies the qualities celebrated by the Dr. M. Wosk Environmental Leadership Award.

The award recognizes youth who have the potential to make a profound difference and to become the leaders of the future. Una has been president of her school's Student Council, a member of the Humanitarian Club and a volunteer with the Langley Youth Advisory Council.

Working part-time she earned funds to travel to Costa Rica for Mangrove Conservation Project. Inspiration from the hands-on experience of planting trees and working alongside the community in Costa Rica led Una to raised awareness locally of the environmental crisis that is occurring around the globe. Her ambition is to study biology, perhaps ecology, to help people become more environmentally aware citizens.

Adam and Una demonstrate the importance of investing in our youth to develop, inspire and support the environmental leaders of tomorrow.



*Environmental Leadership
Award Winner
Una Chang*



"The teamwork and the effort that the community was contributing to solving a national problem at a local level stirred something inside of me, inspiring me to create an initiative at home."

– Una Chang

THE DISCOVERY TRAIL AND WETLAND PROJECT



The Discovery Trail and Wetland Project at Aldergrove Regional Park received funding in 2019 from the Sitka Foundation. This is a multi-year project that aims to create a 500-meter peripheral nature trail and new wetland area for sensitive native species. This native habitat will support enhanced habitat for local wildlife such as the western toad (*Anaxyrus boreas*), and a box for barn owls.

Children and other visitors to the park will have a chance to get up close to nature and explore. A unique feature includes a spot for students to experience pond dipping during interpretive program visits.

The \$7,500 provided by the Sitka Foundation has funded additional planting, thereby increasing biodiversity, and reducing competition from invasive species. The Discovery Trail and Wetland will officially open to the public in 2020.



2019 GEORGE ROSS

**LEGACY
STEWARDSHIP
PROGRAM**

George Ross was a visionary who generously left a \$2.8-million-dollar bequest for Metro Vancouver Regional Parks. His legacy lives on today in the form of the George Ross Legacy Stewardship Program.

Since 2016, the George Ross Legacy Stewardship Program has granted \$92,123 to 14 different stewardship projects in regional parks. Grants up to \$10,000 are available. A small grant option was introduced to support community projects under \$2,500.



The Pacific Spirit Park Society and the Northern Red-Legged Frog

The Pacific Spirit Park Society applied for a grant from Pacific Parklands Foundation through the George Ross Legacy Stewardship Program in late 2018. They were awarded \$10,000 to begin restoring the upland habitat in Pacific Spirit Regional Park. In the Spring of 2019 this dedicated group of nature enthusiast removed invasive species, cleared garbage, and cleared debris from ponds within the forests. Their efforts made the ponds more hospitable to frogs and salamanders. Their project included a goal to improve habitat for the Northern Red-Legged Frog.



Photo Credit: Colin Durfee

This medium-sized frog gets its name from the red undersides of its legs. Listed as a species at-risk Special Concern by the Species at Risk Act (SARA), the Red-Legged Frog (*Rana aurora*) resides from Southwestern BC to northwestern California. It requires a unique combination of wetlands and forested habitat – exactly the type of ecosystems found in Pacific Spirit Regional Park. The first phase of this project included habitat mapping and fence building. The Pacific Spirit Park Society is also using this project to educate and raise community awareness of sensitive ecosystems and species at-risk.





LEAVING A PATH FOR

**Future
Generations**

Our regional parks are a legacy that we have inherited and hold in trust for future generations. Gifts from our donors add to that inheritance. Some donors, like Bessie Luteyn, choose to support a park which holds special personal significance. Others, like George Ross, choose to leave a legacy that focuses on stewardship and protection of the environment throughout Metro Vancouver Regional Parks. Groups, like the friends of Gordon Smith, choose to create an endowment to encourage youth to become future environmental leaders.

If you share this passion for nature, love parks or want to inspire youth, we would love to work with you. By creating an endowment fund you can support parks and people in perpetuity, ensuring your gift has the greatest impact over time.

Every day we are inspired by our donors whose generosity continues to protect the environment, enhance our regional parks, and connect people to nature. Please join us.

Doreen Lawson

A visionary who left a legacy for Burnaby Lake Regional Park

Bessie Luteyn

Left a \$263,000 gift for Pacific Spirit Regional Park

George Ross

Left a \$2.8 million bequest for Metro Vancouver Regional Parks



Park Association Spotlight

The Kanaka Education & Environmental Partnership Society (KEEPS) is a registered non-profit that aims to protect the Kanaka Creek watershed ecosystem through education, community involvement, research, and stewardship. They provided educational programs to 5,784 students in 2019 at the Kanaka Creek Watershed Stewardship Centre, which includes the Bell-Irving Hatchery, the George Ross Learning Room, and wetlands. With help from the Department of Fisheries and Oceans Canada, Metro Vancouver, and dedicated volunteers KEEPS can rear Coho and chum fry for release in Lower Mainland streams.

The George Ross Learning Room was constructed to provide a place for learning and community engagement at the generous bequest of Mr. George Ross.



Volunteers love regional parks. How else can we explain 22,026 volunteer hours in 2019 in Metro Vancouver regional parks? Removing invasive species or planting native ones, volunteers lend their hands to personally fighting climate change and protecting plants and wildlife. Many of our most passionate, long-term volunteers serve alongside others in one of seven park associations.

Park Associations partner with Metro Vancouver Regional Parks to enhance and protect a specific regional park. They are self-governed, non-profit entities that are involved in management plans, enhancement projects, community events and educational programs. We are inspired by the hard work and dedication of these committed volunteers through these park associations.

Boundary Bay Park Association (BBPA)

BBPA holds community engagement events and promotes appreciation for the park through stewardship and group activities.

Burnaby Lake Park Association (BLPA)

BLPA hosts community events to promote awareness, manages conservation projects and works with local Stream keeper groups.

Colony Farm Park Association (CFPA)

CFPA aims to provide an enjoyable park experience while protecting the park environment. They hold nature walks every spring.

**Derby Reach/
Brae Island Parks Association (DRBIPA)**

DRBIPA provides educational community and stewardship events, with special opportunities for volunteer involvement.

Kanaka Education and Environmental Partnership Society (KEEPS)

KEEPS hosts educational programs, promotes stewardship and partners with the Bell-Irving Hatchery to rear salmon fry for release.

Minnehada Park Association (MPA)

MPA works to conserve natural and historical features through education and stewardship activities.

Pacific Spirit Park Society (PSPS)

PSPS aims to preserve the park's urban forest through ecological restoration and environmental education.

YEAR IN REVIEW

FINANCIAL HIGHLIGHTS

FUNDS

● Property	\$666,000
● General Funds	\$490,954
● Program & Projects	\$ 308,827
● Endowment	\$ 270,003
● Dr. M. Wosk Fund	\$ 72,472
● Gordon Smith Fund	\$ 15,286
Total	\$1,823,542

EXPENSES

● Administration	\$165,123
● Projects	\$ 77,229
● Programs & Awards	\$ 69,084
● Communications & Public Relations	\$ 37,961
Total	\$349,397

REVENUE

● Designated	\$258,443
● Government Grants	\$179,289
● Commemorative	\$ 76,202
● Income	\$ 16,524
● Undesignated	\$ 15,341
Total	\$545,799

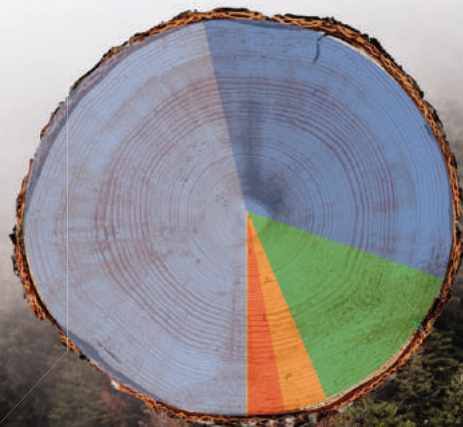
FUNDS



EXPENSES



REVENUE



Our operating costs are covered by a generous operating grant from Metro Vancouver Regional Parks, ensuring our donors' gifts can make the greatest possible impact on programs and projects in regional parks.

Every Day is a Good Day for a Picnic

Please join us and support a regional park near you.



Stretching from Crippen Regional Park on Bowen Island to Aldergrove and Boundary Bay regional parks, parks are full of special memories for visitors and their families. Along the paths and shores of our parks many families have chosen to celebrate an occasion or honour a loved one with bench or picnic table in the name of a loved one.

These commemorative benches and tables share the love of our regional parks with other visitors and create a sense of history and place.

Sherrie and Terry Thorne were inspired to celebrate their family's memories of time in nature by donating funds for a picnic table

in Deas Island Regional Park. Future visitors to the park will be inspired by the Thorne family's plaque dedication: "Every day is a good day for a picnic."

In 2019 we facilitated the donation of 15 commemorative gifts. Through their generosity our donors have given countless community members a sense of belonging while resting on a park bench or enjoying picnic.

WITH YOUR HELP

Pacific Parklands works to make the regional parks system the best it can be, for now and for future generations.



together
We Can

2019 Board of Directors

David Pohl,
President

Lindsey Fryett Jerke

Richard Hankin

Kevin O'Callaghan,
Vice President
and Secretary

Steve Hnatiuk

Ryan Lee

Eleanor O'Connor

Sarah Marsh,
Treasurer

John Scott

Mark van der Zalm

Non-Voting Representatives

John McEwen, Mayor,
Village of Anmore

Ron McLaughlin, Mayor,
Village of Lions Bay

Mike Redpath, Director,
Metro Vancouver
Regional Parks

Pacific Parklands Foundation

21st Floor, 4730 Kingsway
Burnaby, BC V5H 0C6

www.pacificparklands.com

Email: info@pacificparklands.com

Tel: (604) 451-6168

Registered Charity Number:

889353017RR0001

SUPPORTING A PARK NEAR YOU



Ecological Conservancy Areas are set aside to protect sensitive natural areas and are closed to the public.

Aldergrove Regional Park • Barnston Island Regional Park • Belcarra Regional Park • Blaney Bog Regional Park Reserve • Boundary Bay Regional Park • Brae Island Regional Park • Brunette-Fraser Regional Greenway • Burnaby Lake Regional Park • Burns Bog Ecological Conservancy Area • Campbell Valley Regional Park • Capilano River Regional Park • Codd Wetland Ecological Conservancy Area • Colony Farm Regional Park • Crippen Regional Park • Deas Island Regional Park • Delta-South Surrey Regional Greenway • Derby Reach Regional Park • Fraser Islands Regional Park Reserves • Glen Valley Regional Park • Grouse Mountain Regional Park • Iona Beach Regional Park • Kanaka Creek Regional Park • Lynn Headwaters Regional Park • Minnehkha Regional Park • North Alouette Greenway • Pacific Spirit Regional Park • Pitt River Regional Greenway • Seymour River Regional Greenway • Surrey Bend Regional Park • Thwaytes Landing Regional Park • Tynehead Regional Park • Widgeon Marsh Regional Park